



**AMERICAN
TRUCK DEALERS**
A DIVISION OF NADA

INDUSTRY RELATIONS

Industry Relations / ATD Dealer/Manufacturer Industry Relations Yearbook

ATD Dealer/Manufacturer Industry Relations Yearbook

The ATD Industry Relations Yearbook includes the names, addresses and contact information for each truck maker, along with dealer statistics and annual sales figures. Please send updates to atd@nada.org.

- > [ATD Industry Relations](#)
- > [Ford Commercial Truck](#)
- > [Freightliner Trucks](#)
- > [Hino Trucks](#)
- > [International](#)
- > [Isuzu Commercial Truck of America Inc.](#)
- > [Kenworth Truck Co.](#)
- > [Mack Trucks Inc.](#)
- > [Peterbilt Motors Co.](#)
- > [Volvo Trucks North America](#)
- > [Western Star Trucks](#)

*All sales figures are U.S. retail for truck classes 4-8, published by *Ward's Communications* and are 2021 year-end sales numbers.



ATD INDUSTRY RELATIONS
8484 Westpark Drive
Suite 500
Tysons, VA 22102



Steve Bassett
ATD Chairman
General Truck Sales
Muncie, IN
800.382.7717



Scott McCandless
ATD Vice Chair
McCandless Truck Center LLC
Aurora, CO
303.739.9900



Barbara Robinson
Senior Director, ATD



Kim Carey
Manager, ATD

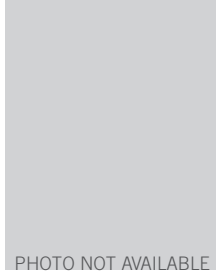
FORD COMMERCIAL TRUCK

16800 Executive Plaza Dr., Dearborn, MI 48126
313.322.3000

Dealerships **654**
Sales* **84,167**



Ted Cannis
CEO



Robert Peruzzi
Commercial Vehicle Sales
Manager



Jeff Speno
ATD Line Rep
Mission Valley Ford Truck
Center, San Jose, CA
408.933.2300



Andy O'Donnell
Dealer Council Chair
Valley Ford Trucks
Valley View, OH
216.524.2400

FREIGHTLINER TRUCKS

2477 Deerfield Dr., Fort Mill, SC 29715
803.578.3000

Dealerships **367**
Sales* **131,698**



John O'Leary
President and CEO



David Carson
Senior Vice President,
Sales and Marketing



Drew Backeberg
Senior Vice President,
Aftermarket



Kevin Holmes
ATD Line Rep
Advantage Truck Group
Shrewsbury, MA
508.753.1200



Tim Fyda
Dealer Council Chair
Fyda Freightliner
Columbus, OH
614.851.0002

HINO TRUCKS

45501 12 Mile Rd., Novi, MI 48377
248.699.9300

Dealerships **199**
Sales* **1,767**



Shigehiro Matsuoka
President and CEO



Bob Petz
Senior Vice President,
Vehicle and Parts Sales



Glenn Ellis
Senior Vice President,
Customer Experience



Alex Clarke
Dealer Council Chair
Brechtbuhler Truck Sales
Canton, OH
330.477.8127

INTERNATIONAL

2701 Navistar Dr., Lisle, IL 60532
331.332.5000

Dealerships **511**
Sales* **53,749**



Mathias Carlbaum
President and CEO



Friedrich W. Baumann
President



Terry Minor
ATD Line Rep
Cumberland International
Trucks Inc.
Nashville, TN
615.829.7801



Jim Carello
Dealer Council Chair
Regional International
Henrietta, NY
585.359.2011

ISUZU COMMERCIAL TRUCK OF AMERICA INC.

1400 S. Douglass Rd., Anaheim, CA 92806
714.935.9300

Dealerships **327**
Sales* **19,510**



Shaun Skinner
*President, Isuzu
Commercial Truck
of America*



Keith Rutherford
ATD Line Rep
Eagle Truck Center LLC
Shreveport, LA
318.865.4779



John Paradis
Dealer Council Chair
Stadium Isuzu Trucks
Liverpool, NY
315.475.8471

KENWORTH TRUCK CO.

P.O. Box 1000, Kirkland, WA 98083
425.828.5000

Dealerships **278**
Sales* **40,133**



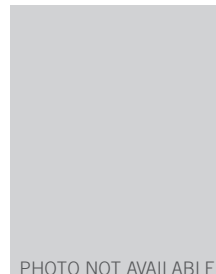
Kevin Baney
*Vice President, PACCAR,
and Kenworth
General Manager*



Sean Edwards
*Director of
Network Development*



Jodie Teuton
ATD Line Rep
Kenworth of Louisiana
Gray, LA
985.876.3000



Todd Rice
Dealer Council Chair
MHC Kenworth
Leawood, KS
877.642.8725

MACK TRUCKS INC.

7900 National Service Rd., Greensboro, NC 27409
336.291.9001

Dealerships **310**
Sales* **21,699**



Martin Weissburg
President, Mack Trucks



Jonathan Randall
*Senior Vice President,
North American Sales*



Jon Pritchett
*ATD Line Rep
Nextran
Lake Butler, FL
386.496.4345*



David Kriete
*Dealer Council Chair
Kriete Group
Milwaukee, WI 53202
414.431.2567*

PETERBILT MOTORS CO.

1700 Woodbrook St., Denton, TX 76205
940.591.4000

Dealerships **237**
Sales* **40,669**



Jason Skoog
General Manager



Robert Woodall
*Assistant General
Manager*



Scott Pearson
*ATD Line Rep
Peterbilt of Atlanta
Jackson, GA
404.592.9980*



Glenn Larson
*Dealer Council Chair
The Larson Group
Springfield, MO
727.439.4136*

VOLVO TRUCKS NORTH AMERICA

7900 National Service Rd., Greensboro, NC 27402
336.393.2000

Dealerships **286**
Sales* **22,104**

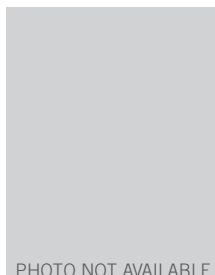
V O L V O



Peter Voorhoeve
President, Volvo Trucks



Kim Mesfin
*ATD Line Rep
Affinity Truck Center
Fresno, CA
559.266.9531*



Matt Niebauer
*Dealer Council Chair
Legacy Truck Centers
Erie, PA
814.898.8396*

WESTERN STAR TRUCKS

2477 Deerfield Dr., Fort Mill, SC 29715
803.578.3000

Dealerships 73
Sales* 6,002



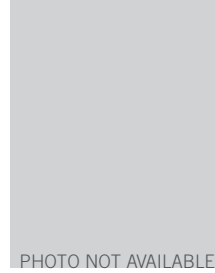
John O'Leary
President and CEO



David Carson
*Senior Vice President,
Vocational Sales
and Marketing*



Drew Backeberg
*Senior Vice President,
Aftermarket*



Cary Addison
*Dealer Council Chair
Southport Truck Group
Tampa, FL
813.262.0890*



Paul Walser
NADA Chairman



Michael Alford
NADA Vice Chairman



Michael J. Stanton
NADA President and CEO